

stylishly refurbished self-contained e class office building

the coach works, 2 munden street, kensington, w14

c.4,700 sq ft for rent, possibly for sale

full of charm, character and light



located off kensington high street and around the corner from olympia where the acclaimed architect thomas heatherwick has created a commercial masterpiece incorporate west london's finest new theatre in some 75 years.

close by stations include olympia (overground & district line), barons court (picadilly and district line), or hammersmith (district, circle and hammersmith & city).

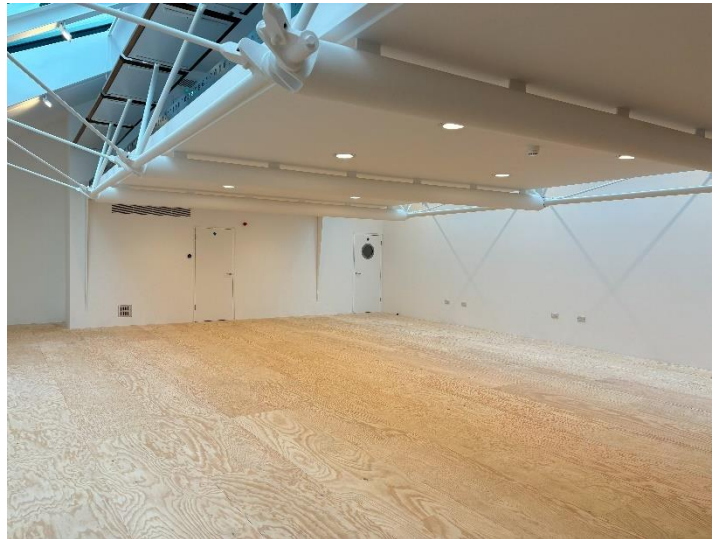
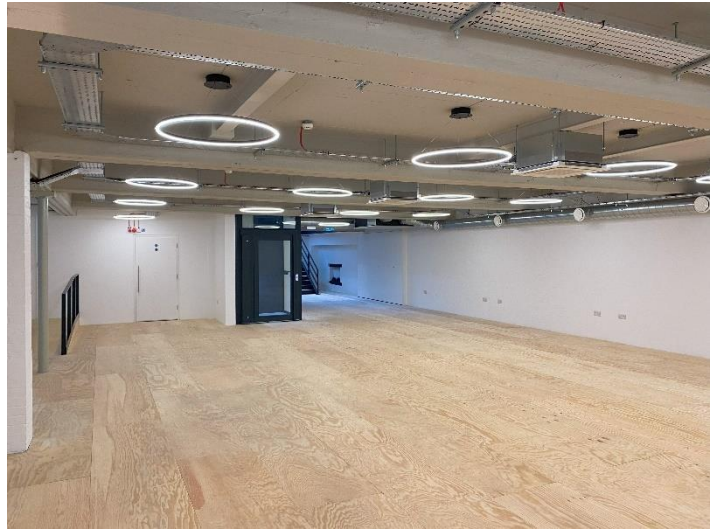
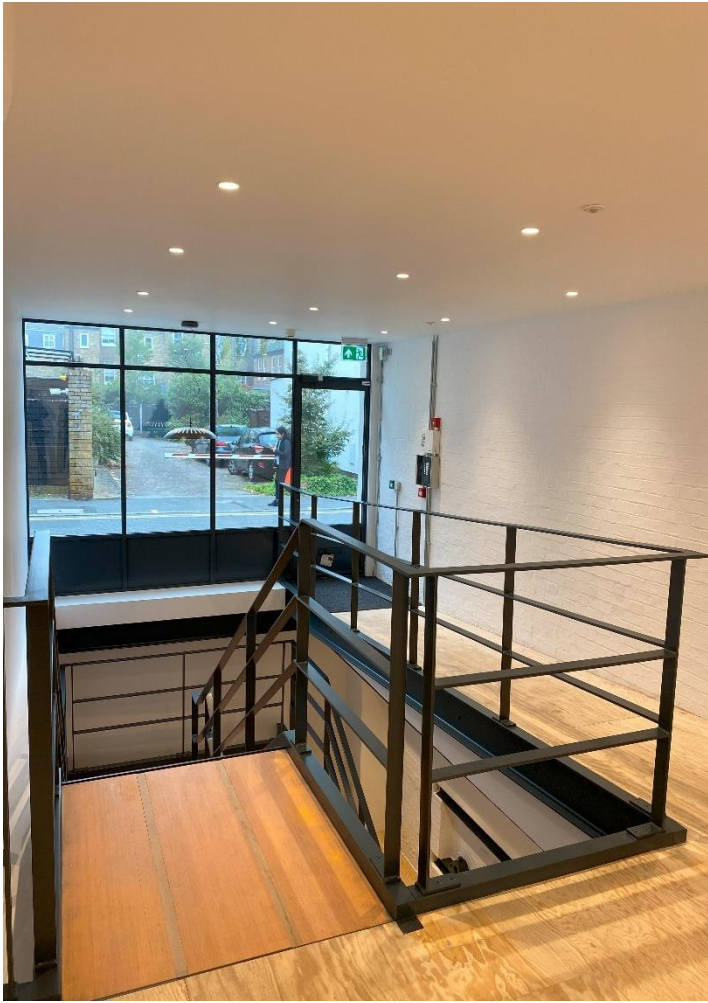
PILCHER LONDON

8 6 0 0



22 7399

TELEPHONE



accommodation

this former coach works has been fully refurbished by the upcoming architect eva jiricna.

lower ground	2,400 sq ft
ground	1,216 sq ft
first	1,044 sq ft
total	4,660 sq ft

amenities

- self-contained building
- good natural light
- sky lights
- solar panels
- stylish metal staircase
- exposed beams and retained feature
- platform lift
- air conditioning
- w/c facilities
- showers and bike storage
- fully fitted kitchenette

rent

c.£250,000 per annum exclusive

lease

by arrangement

legal costs

each party to bear their own legal costs

possession

upon completion

PILCHER LONDON

020 7399 8600

TELEPHONE

viewings

via sole agent's

james faustino

jamesfaustino@pilcher.london

07834 789 346

simon rinder

simonrinder@pilcher.london

07734 488 286

david rosen

davidrosen@pilcher.london

07801 526 711